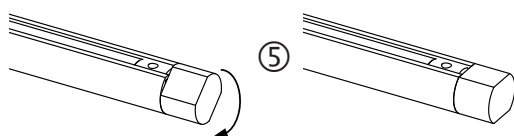
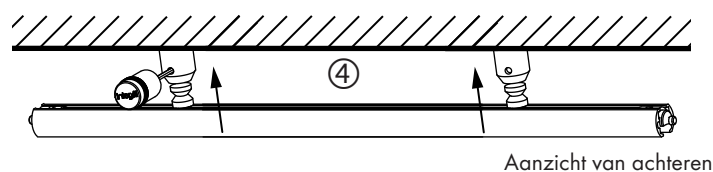
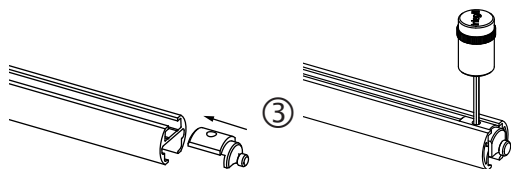
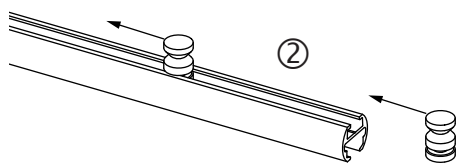
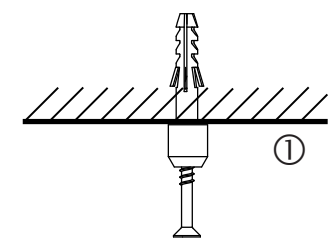
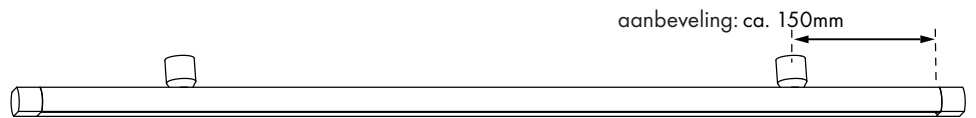
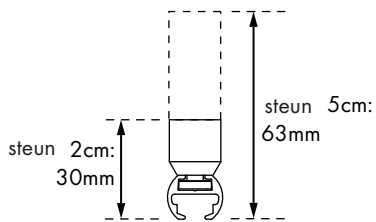


Montage binnenloop Corpus

Ø 16

Maten voor steunmontage

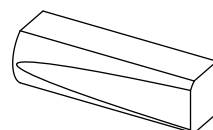


Montage volgorde

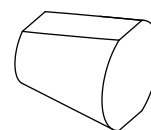
1. De steunen tegen het plafond schroeven ① (klemschroef naar achteren)
2. Binnendelen van de steunen in het profiel schuiven ②
3. Het profielinzetstuk lichtjes vastschroeven ③
4. Binnendelen van de steunen in de gemonteerde steunen steken en vastschroeven ④
5. Het eindstuk uitlijnen (het profielinzetstuk verschuift) ⑤



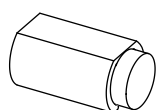
Diskurs



Phantom



Diplom



Didakt