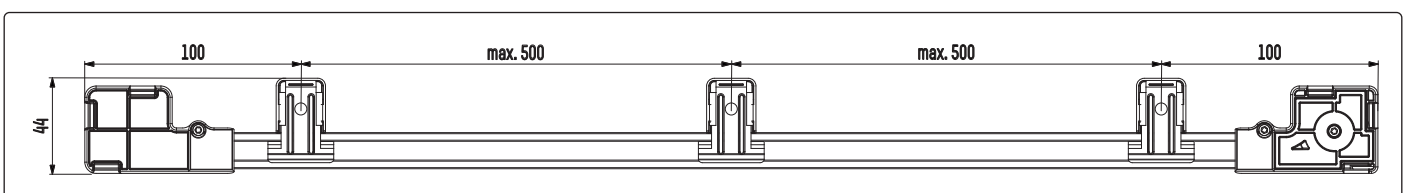
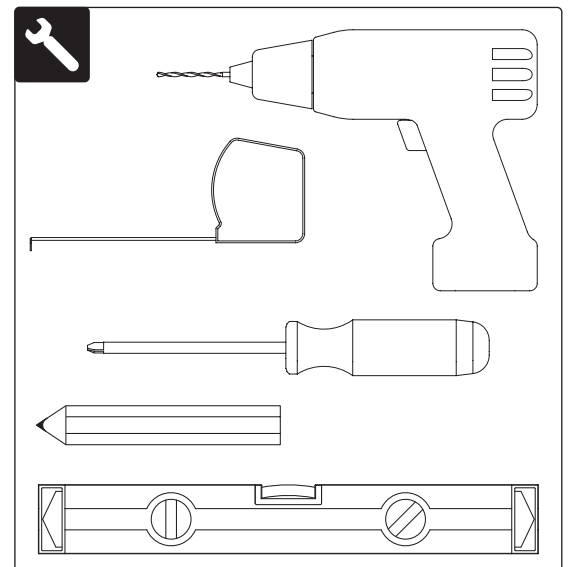
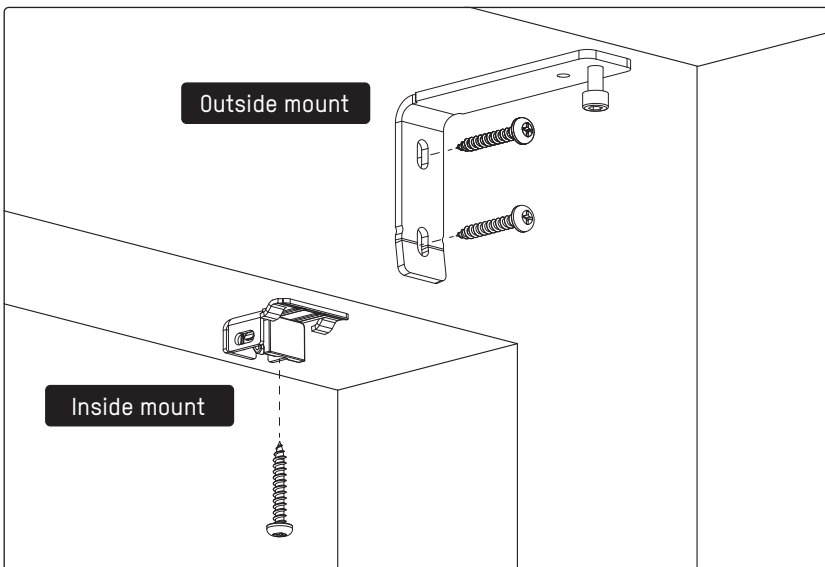
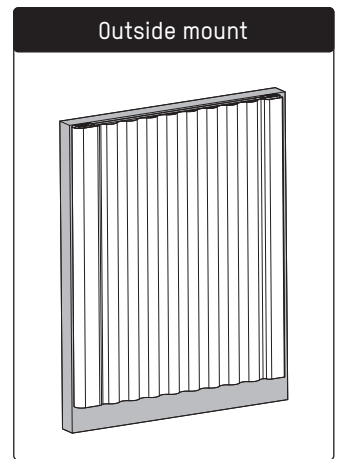
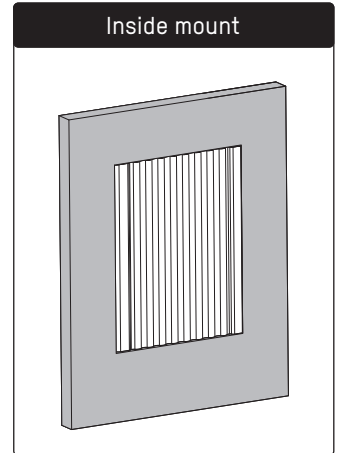
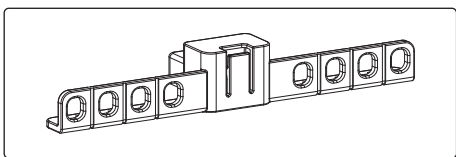
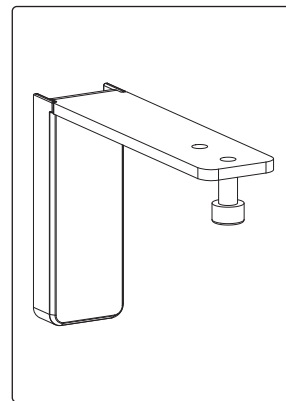
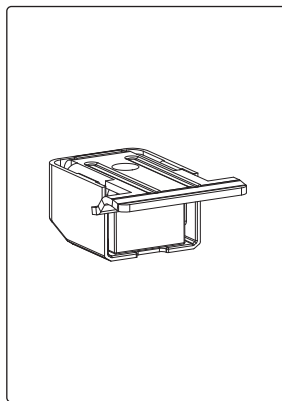
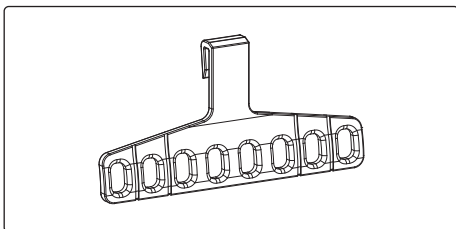
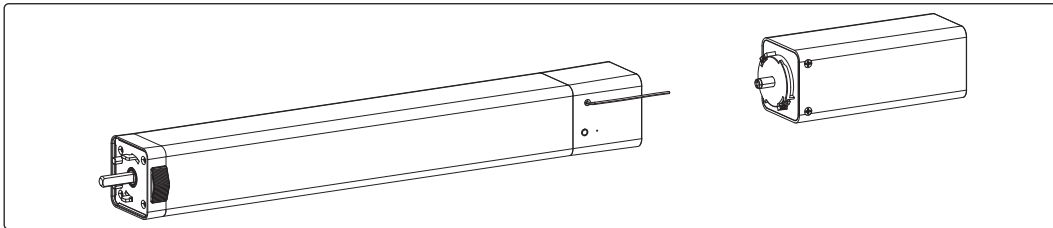
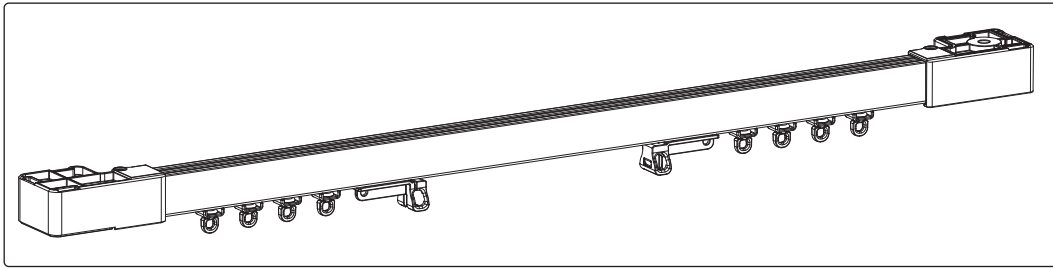




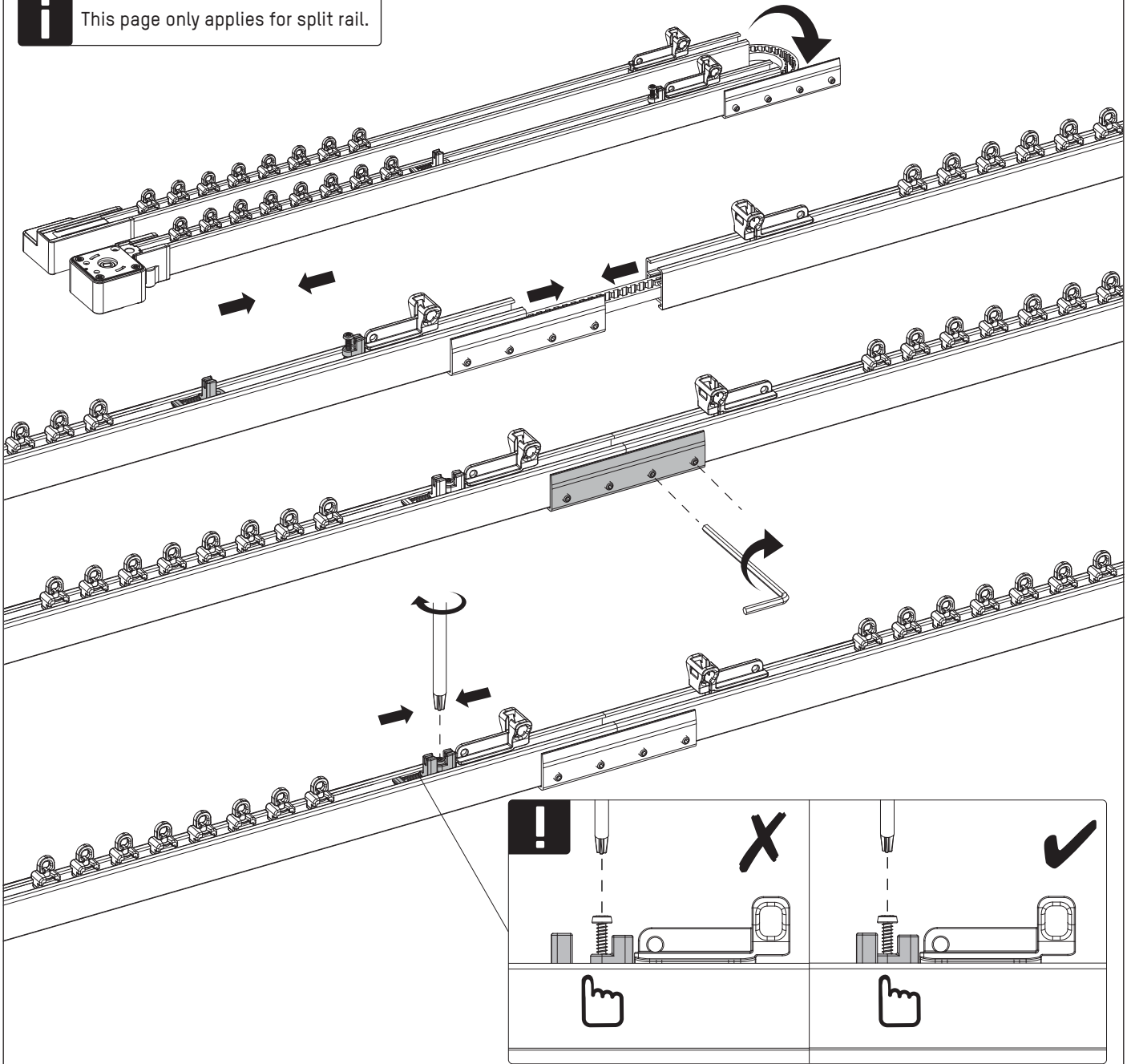
Read the instructions carefully before assembling and using the product.
Assembling process can be completed by non-professionals.
For indoor use only. This product does not require maintenance.

CC-B122, CM-36
Wave, center

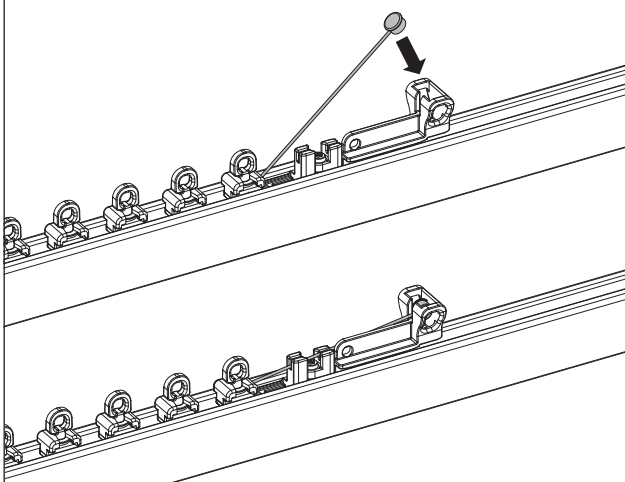




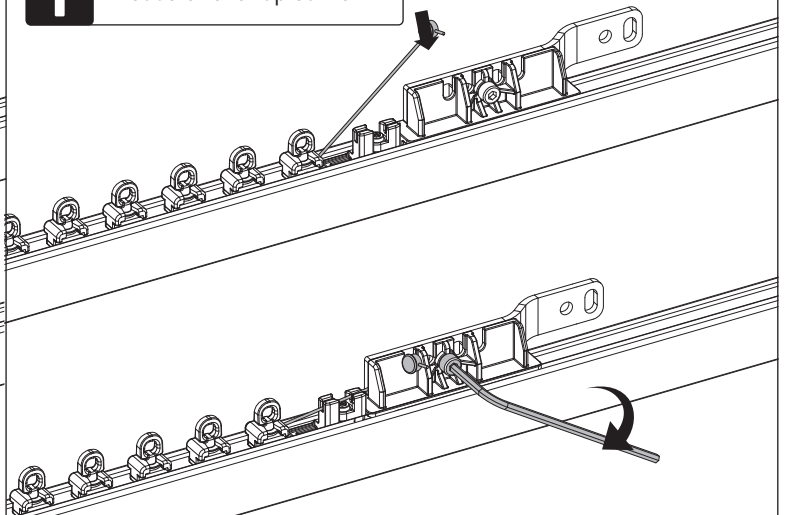
This page only applies for split rail.

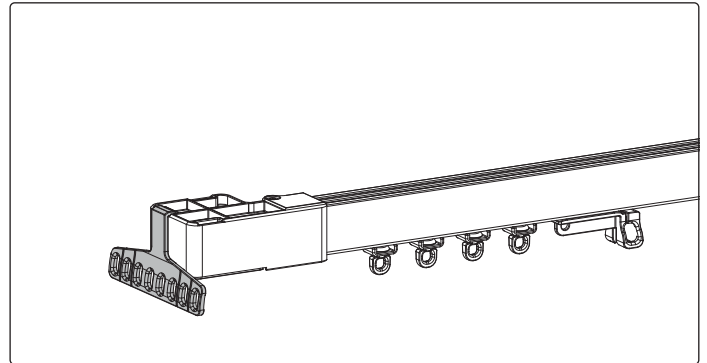
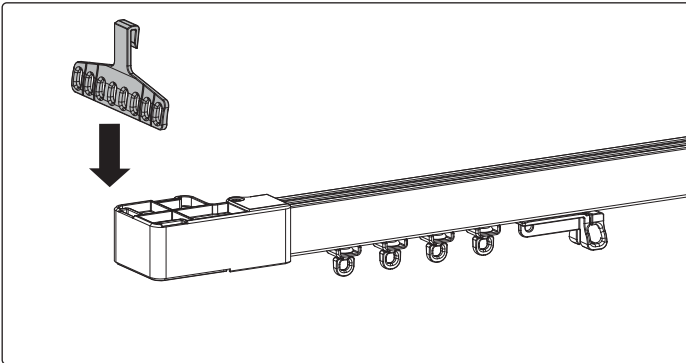
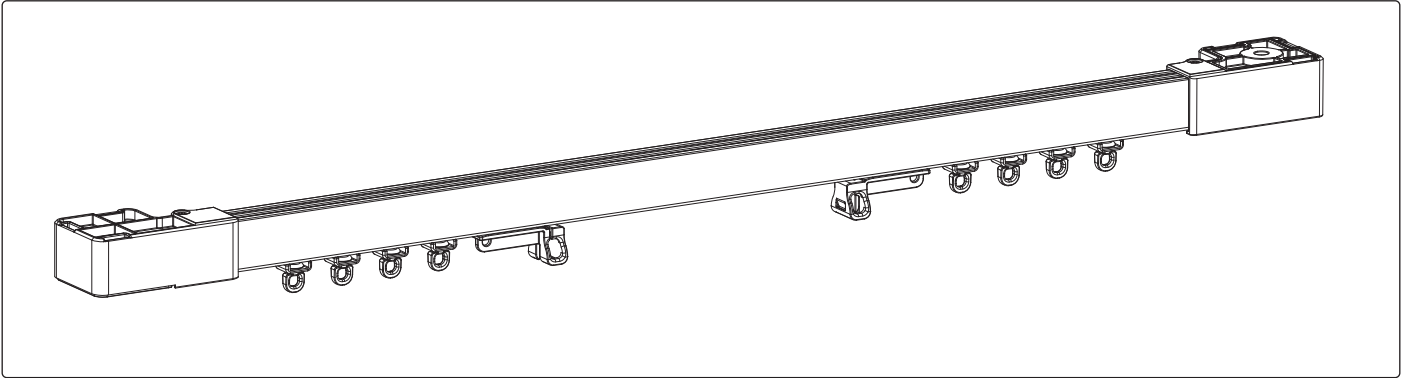


Only for 80 mm wave runners.

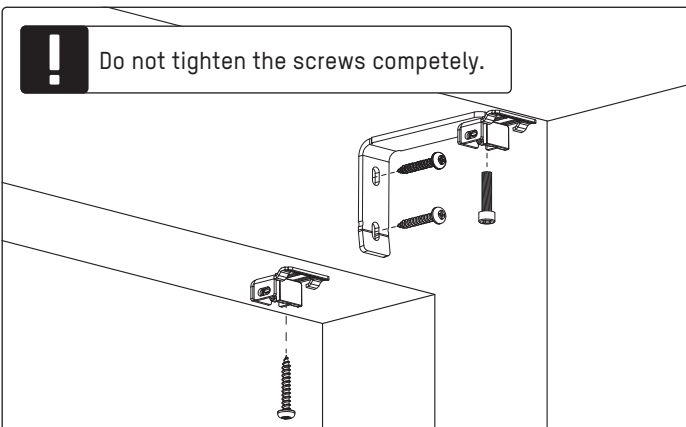
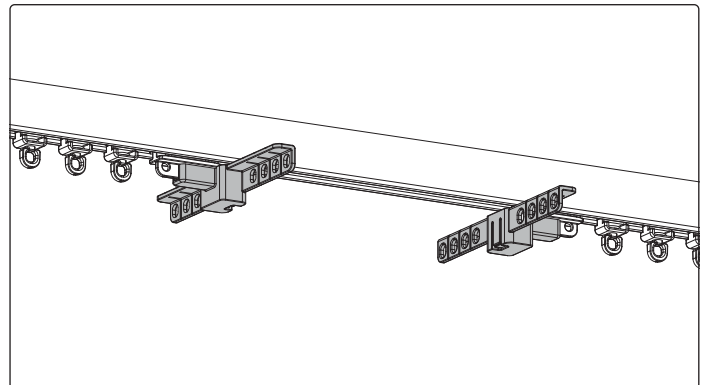
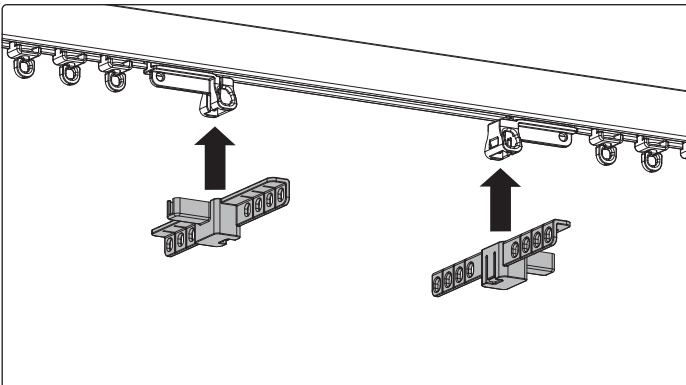


In case of overlap carrier.

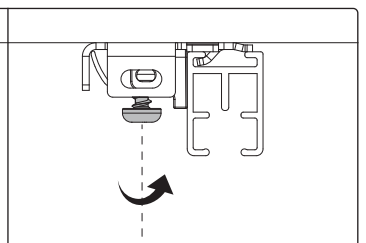
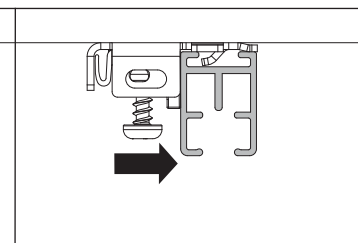
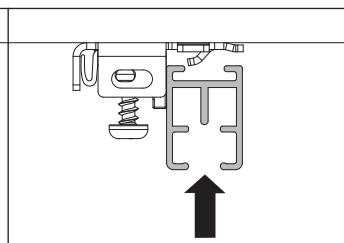
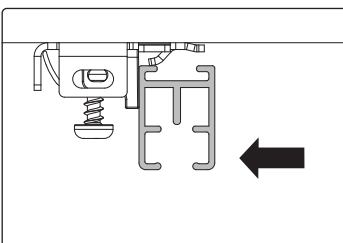
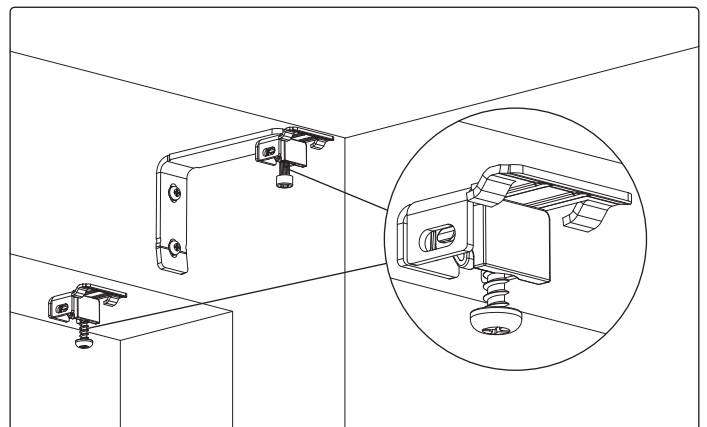


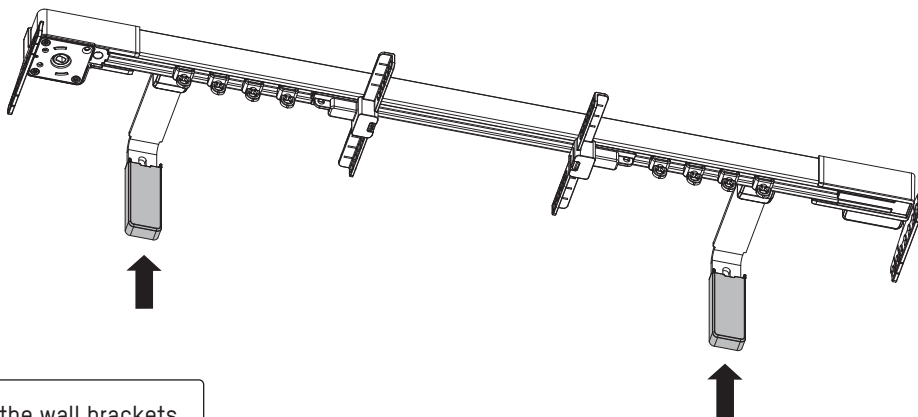
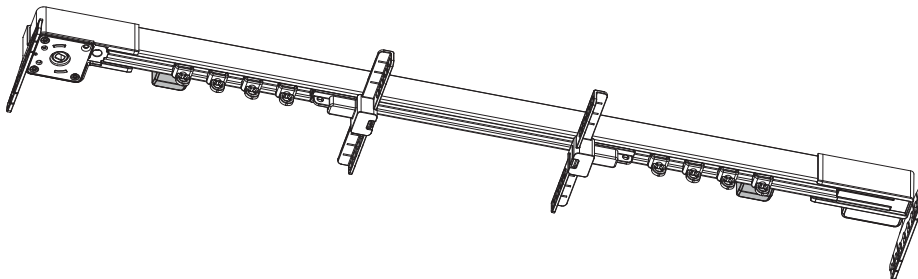
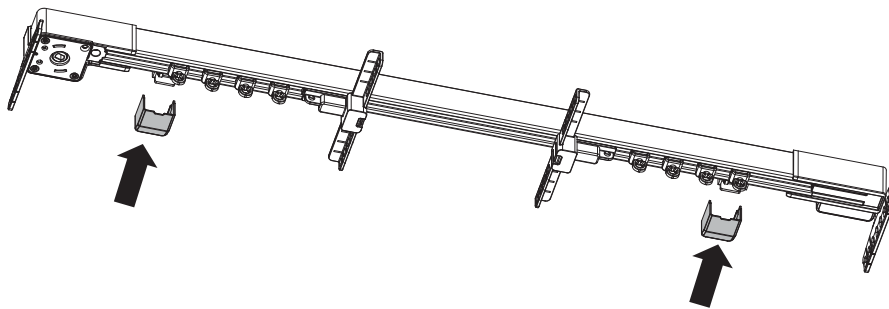


i Also place a support hook on the return end cap.



Do not tighten the screws completely.

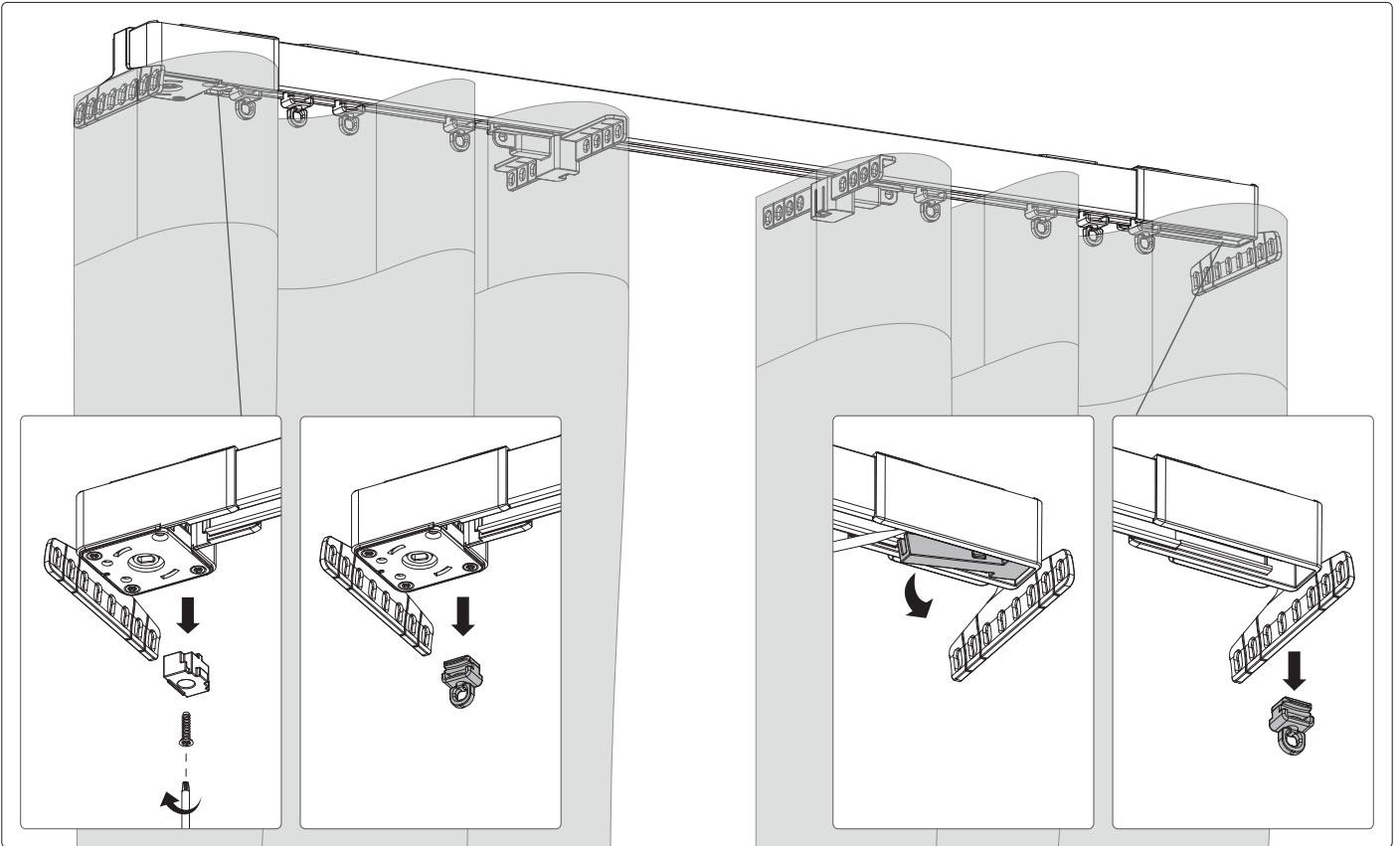




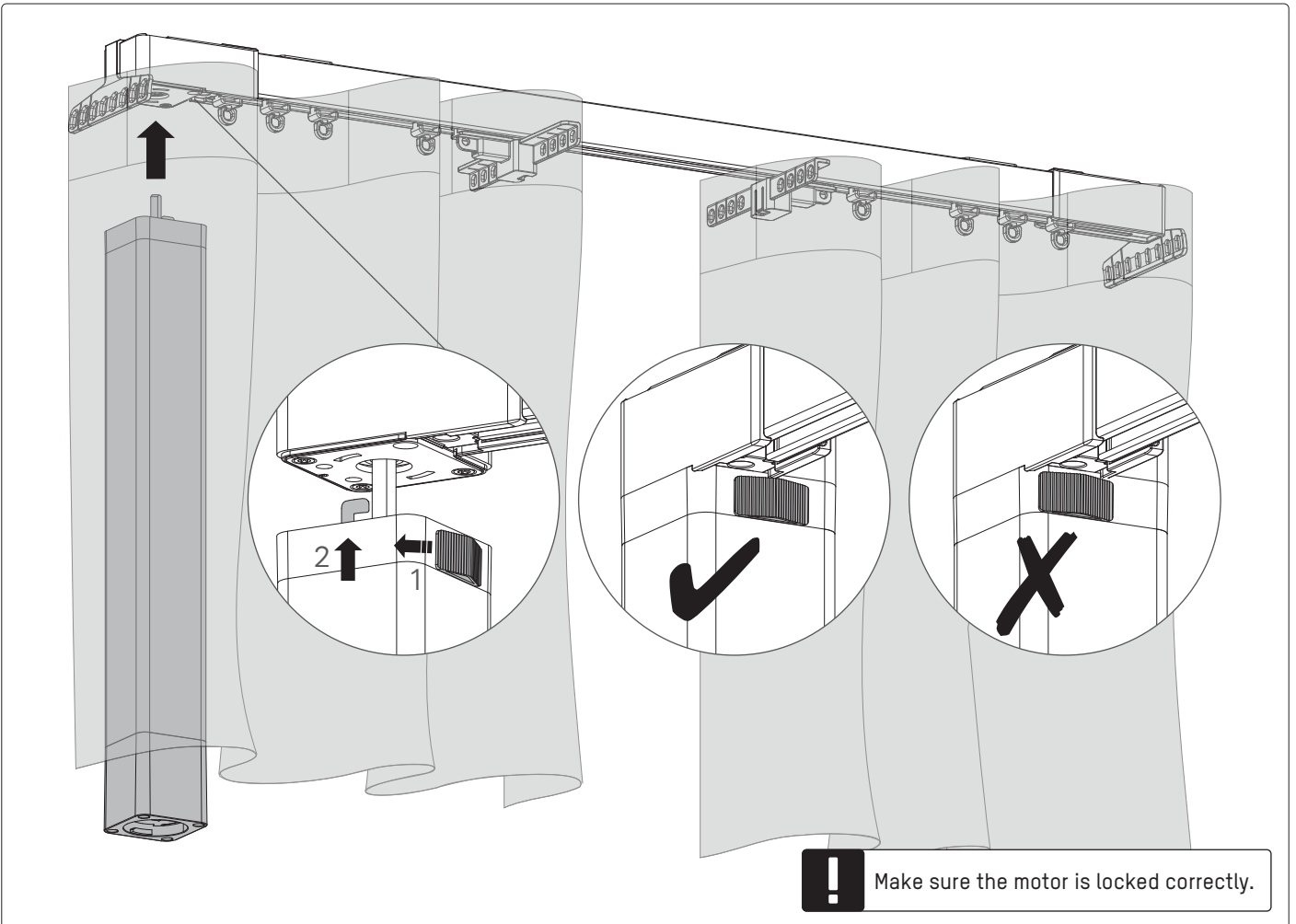
i Only if using the wall brackets.



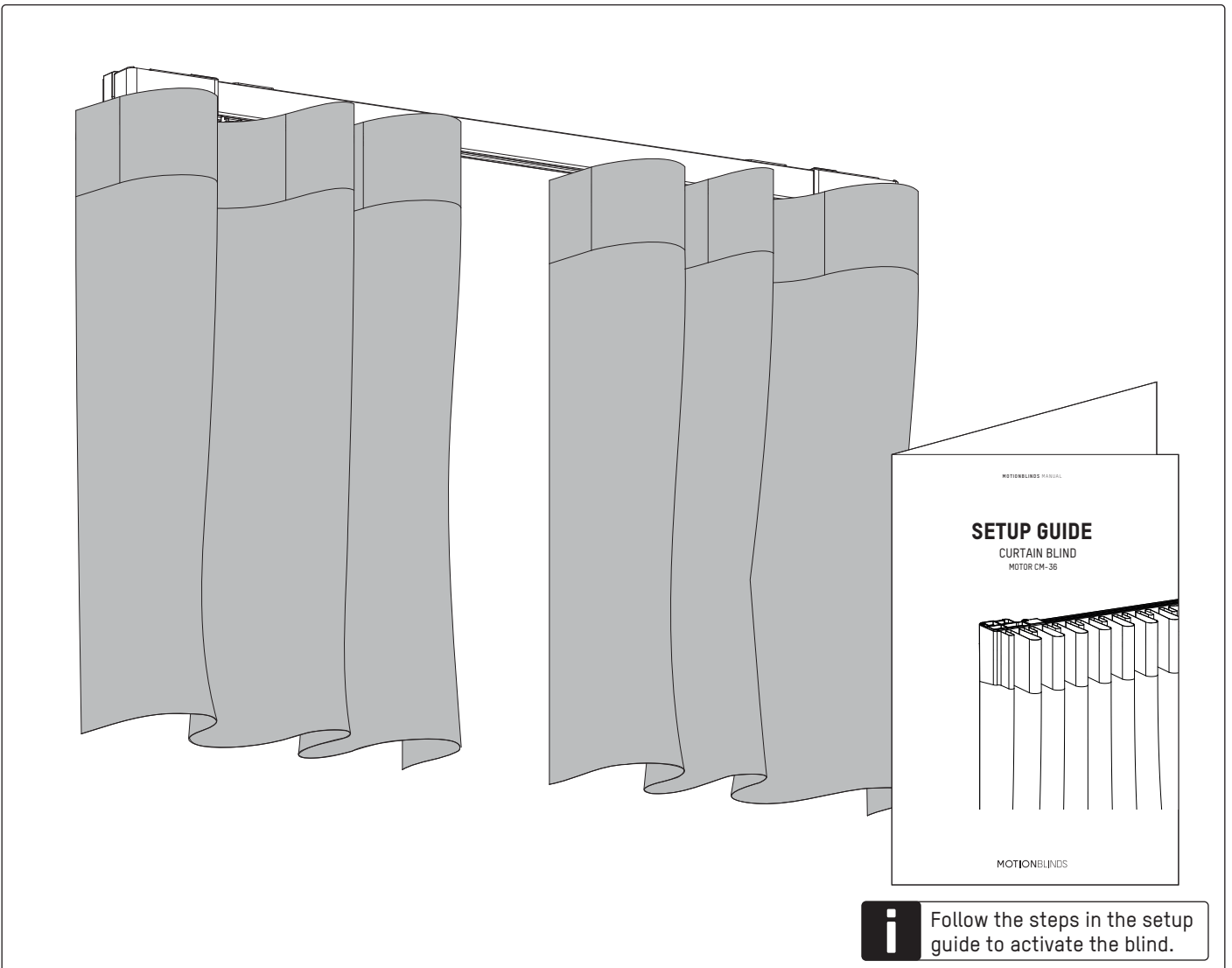
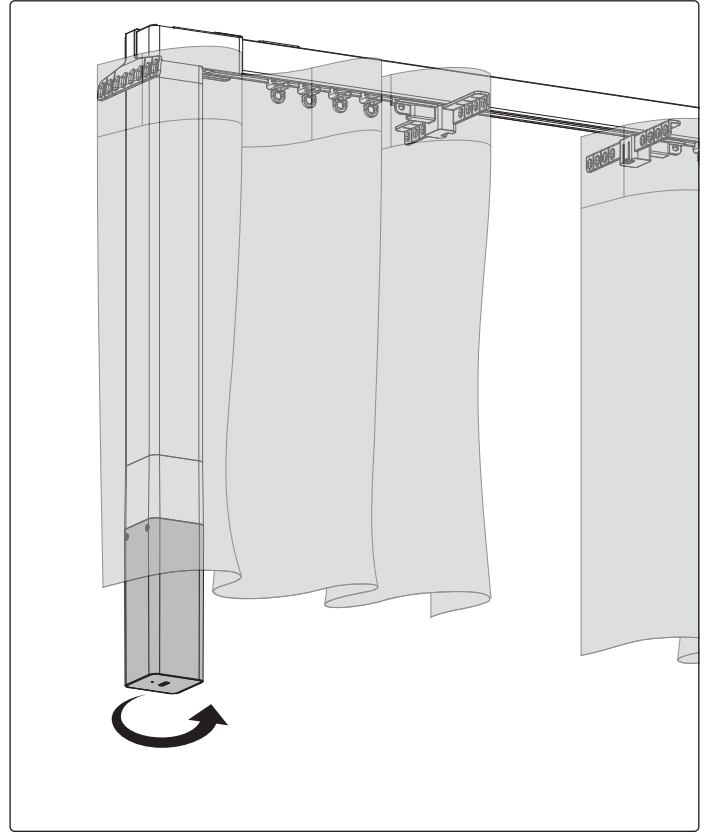
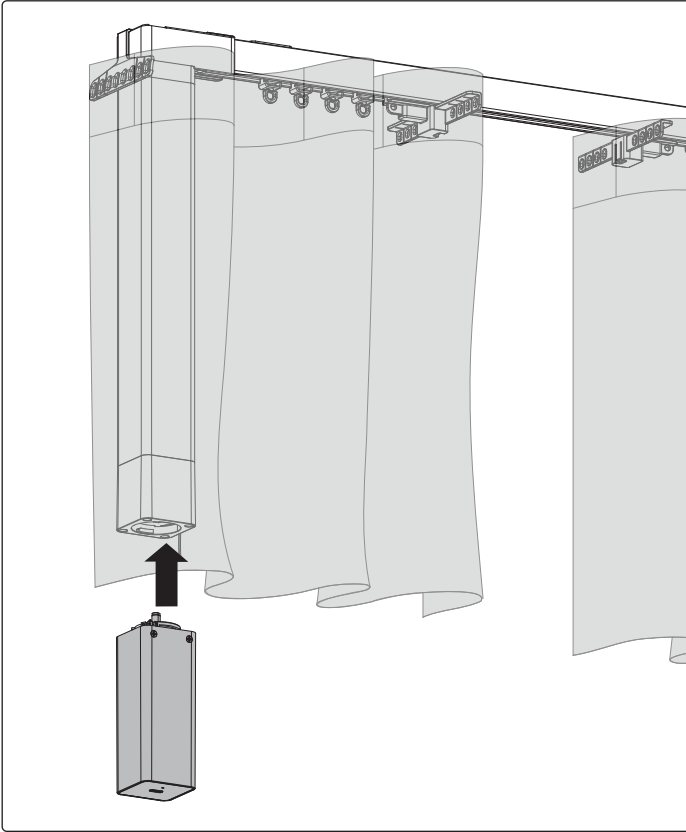
i Attach the curtain to the carriers.



i It is possible to remove or add runners.



! Make sure the motor is locked correctly.



i Follow the steps in the setup guide to activate the blind.