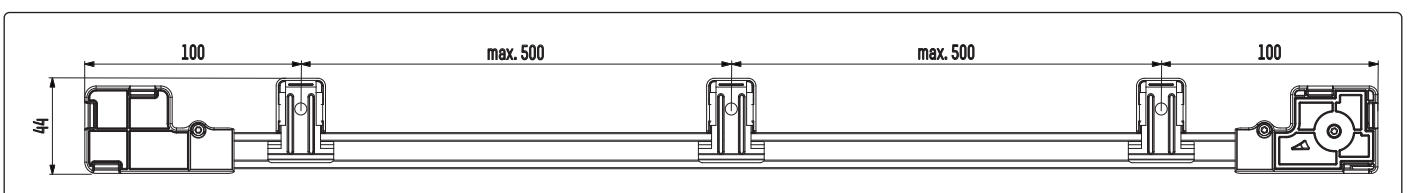
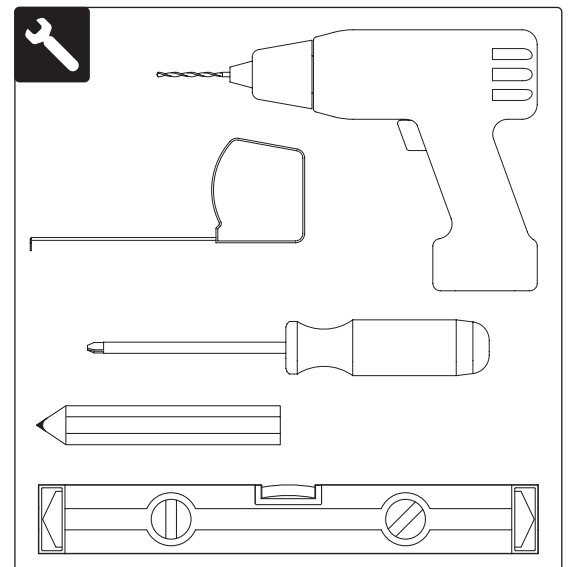
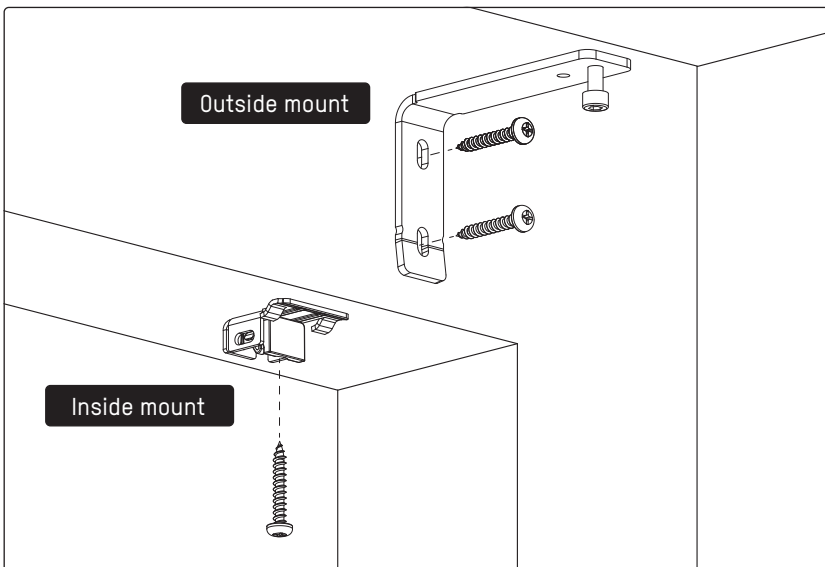
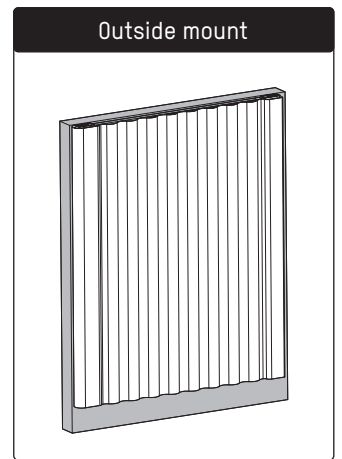
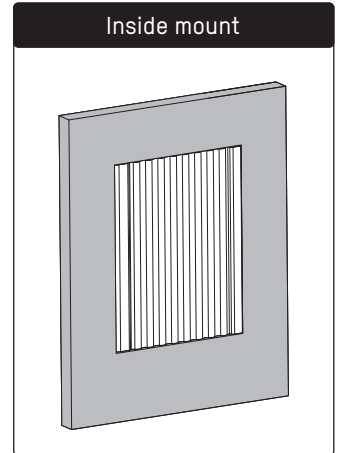
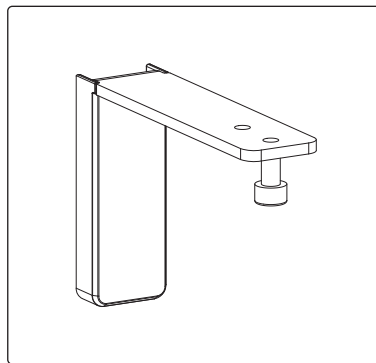
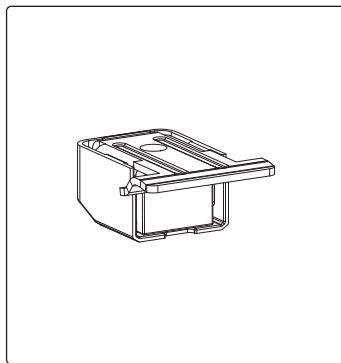
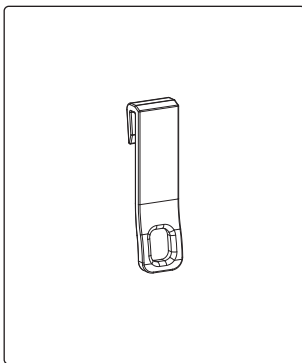
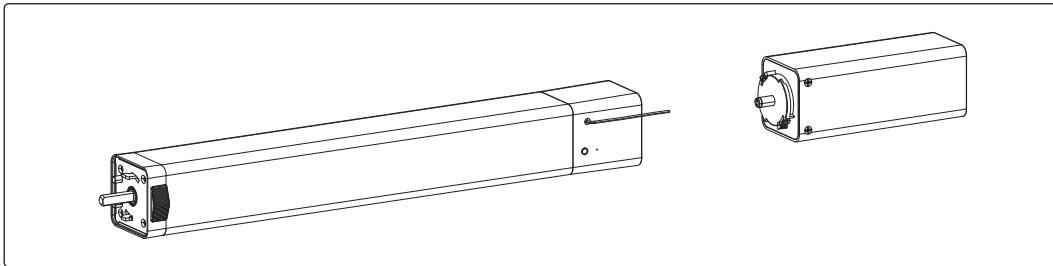
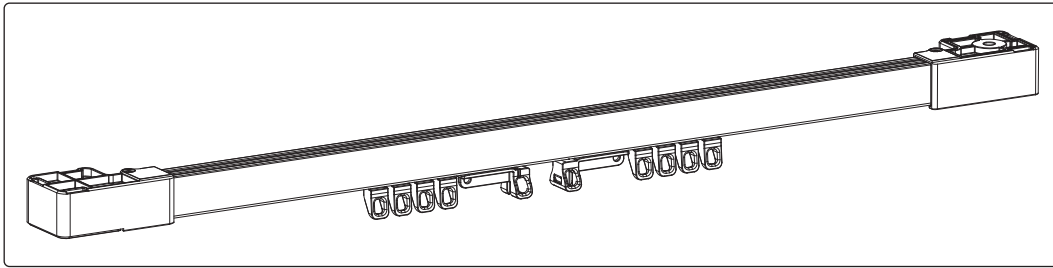




Read the instructions carefully before assembling and using the product.
Assembling process can be completed by non-professionals.
For indoor use only. This product does not require maintenance.

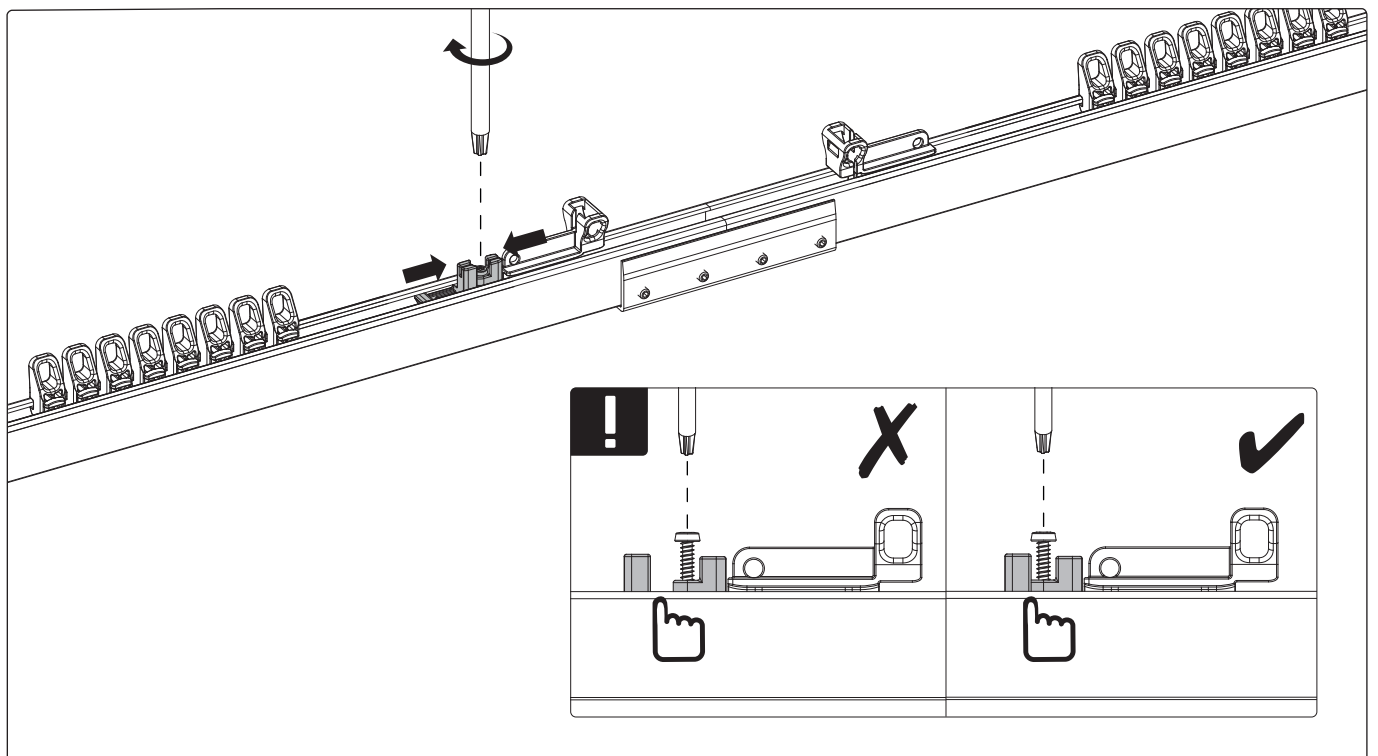
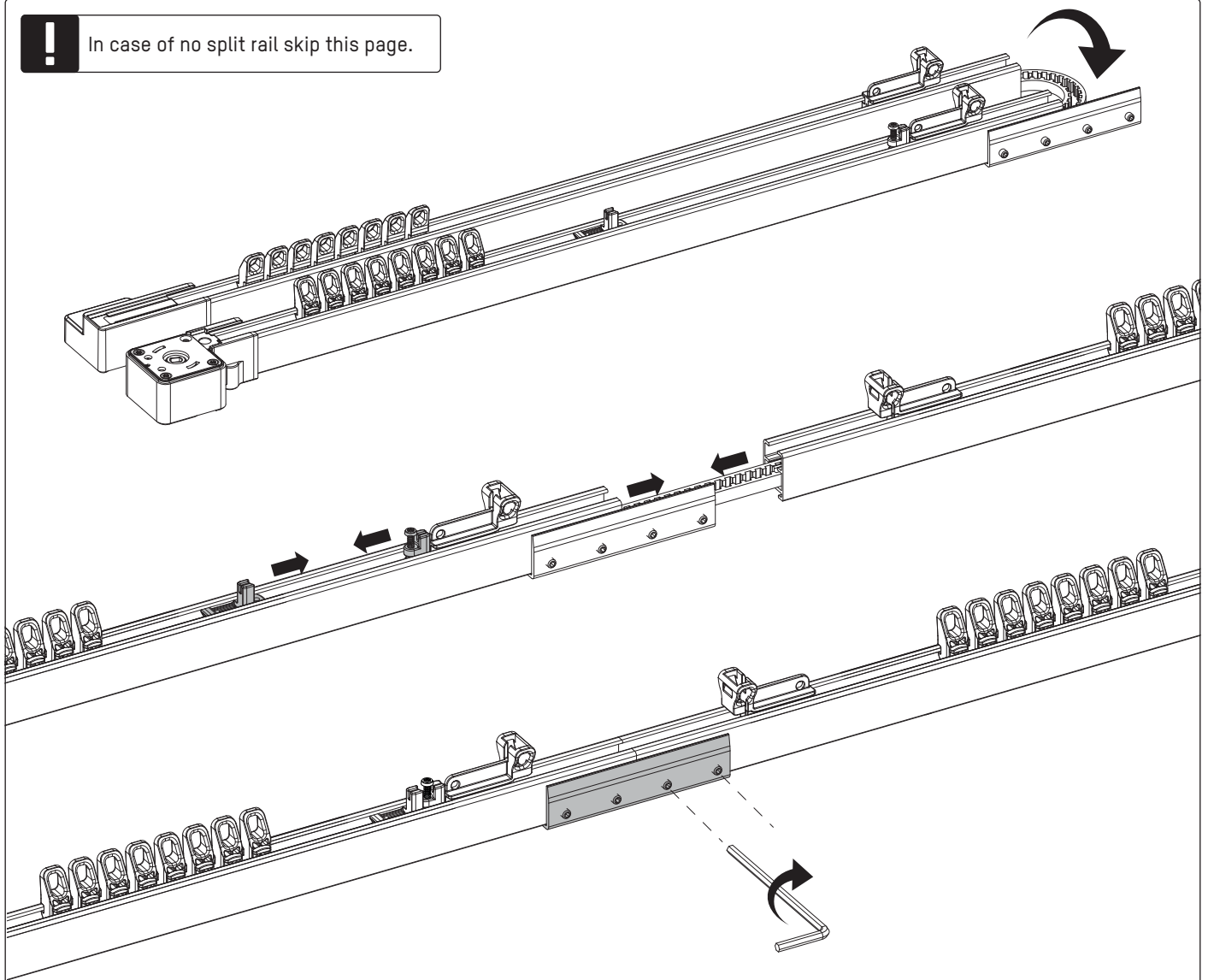
CC-B112, CM-36

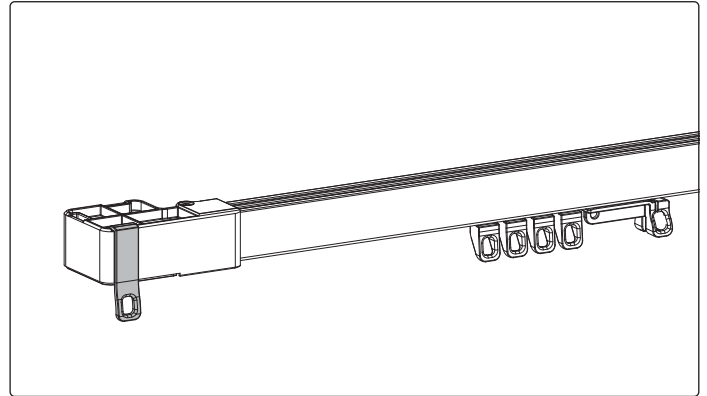
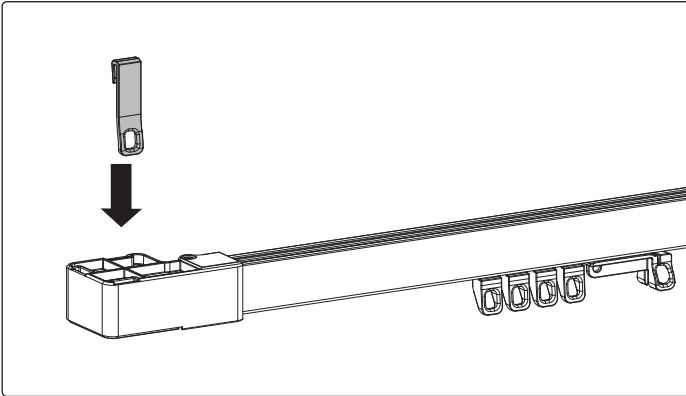
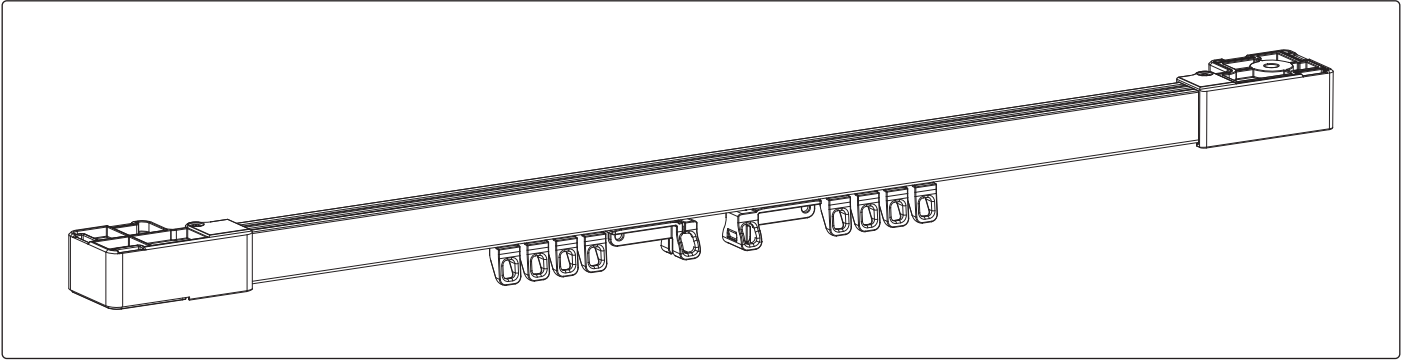
Pleat, center





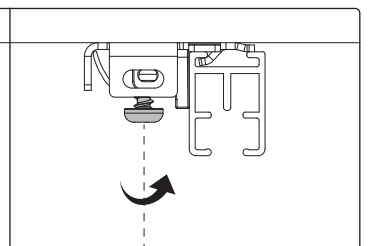
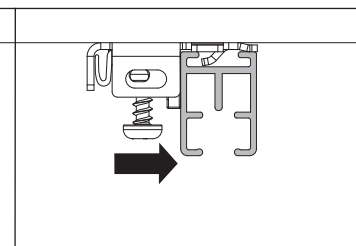
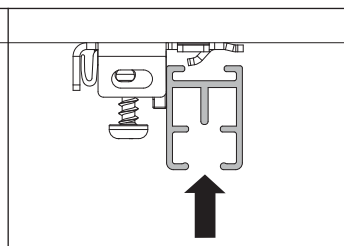
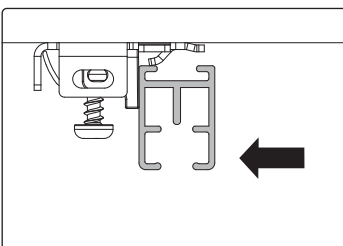
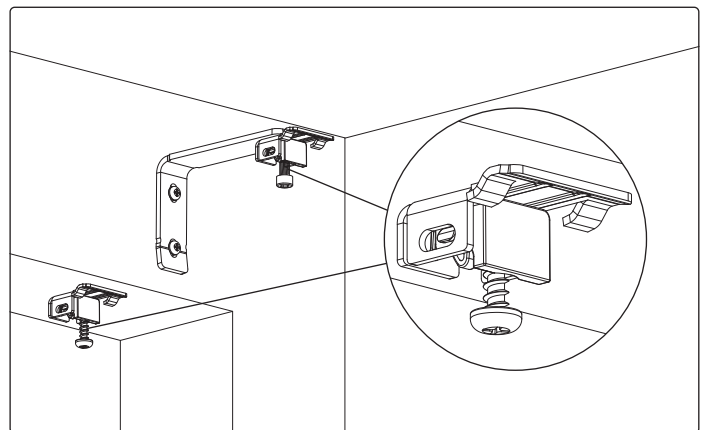
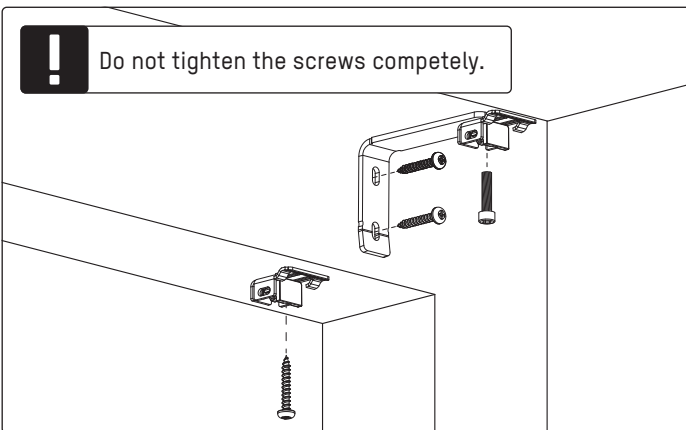
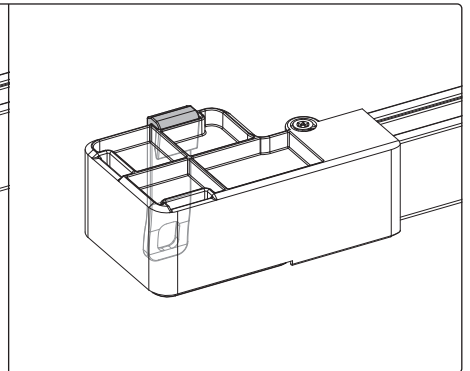
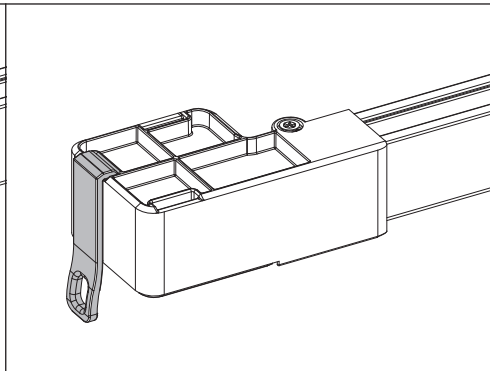
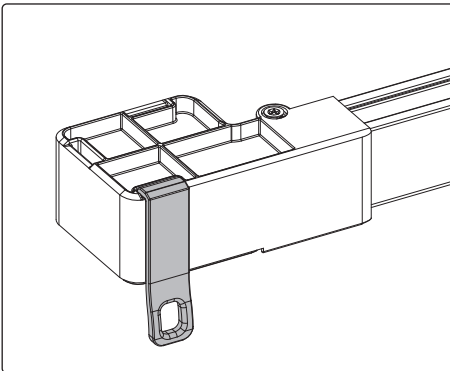
In case of no split rail skip this page.

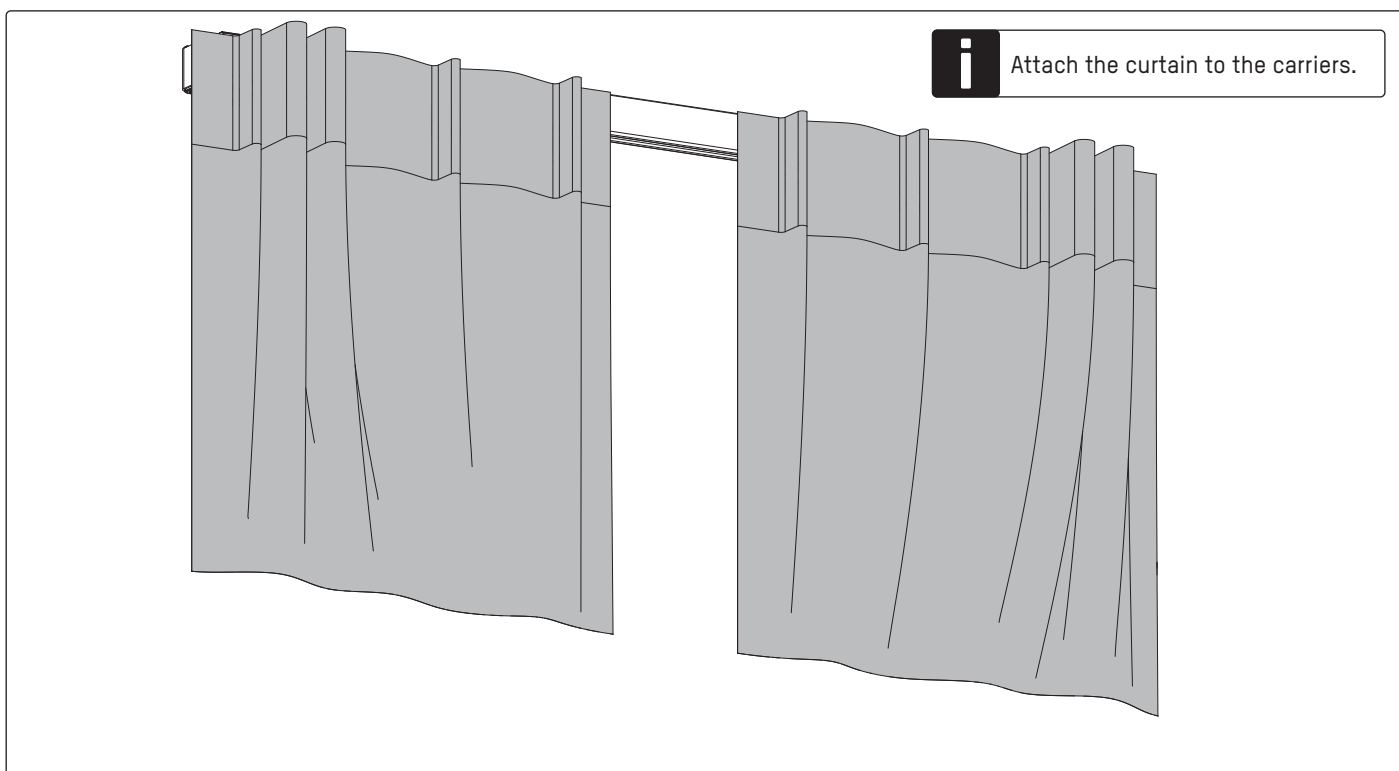
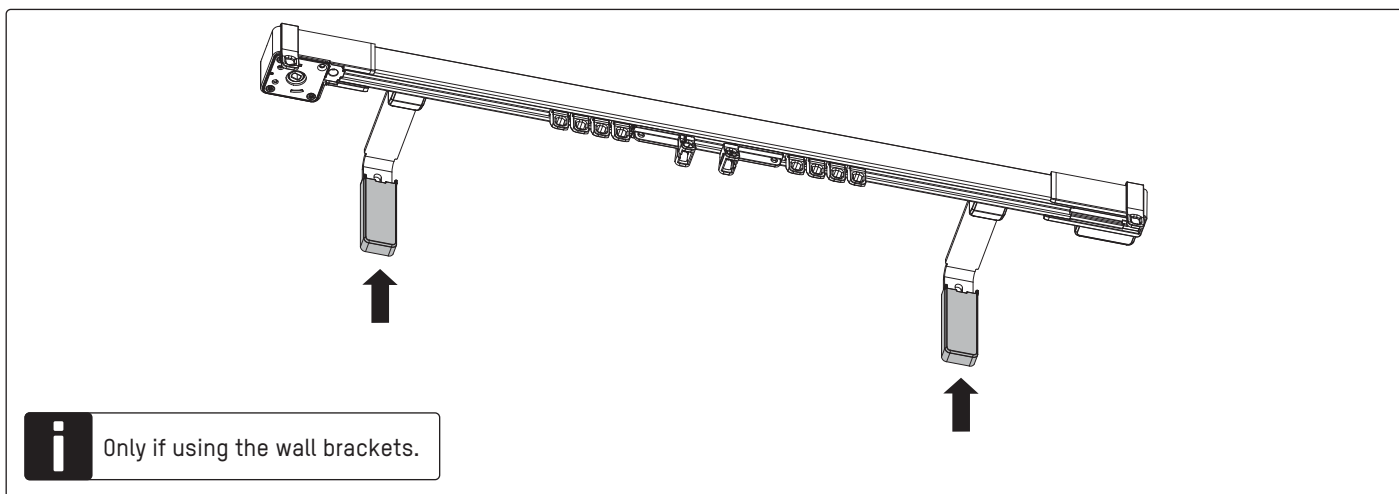
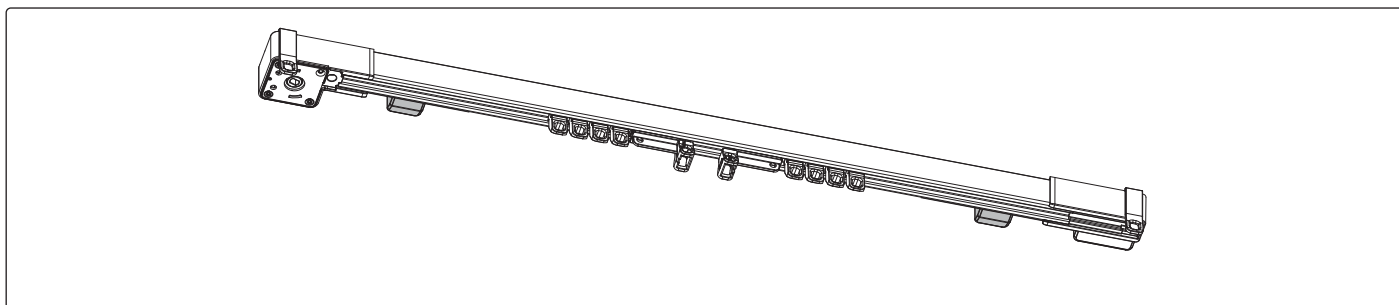
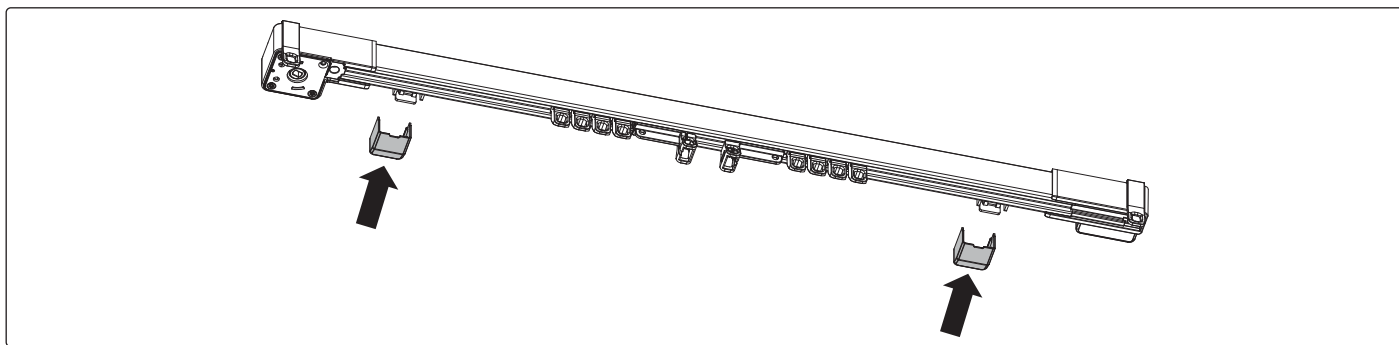


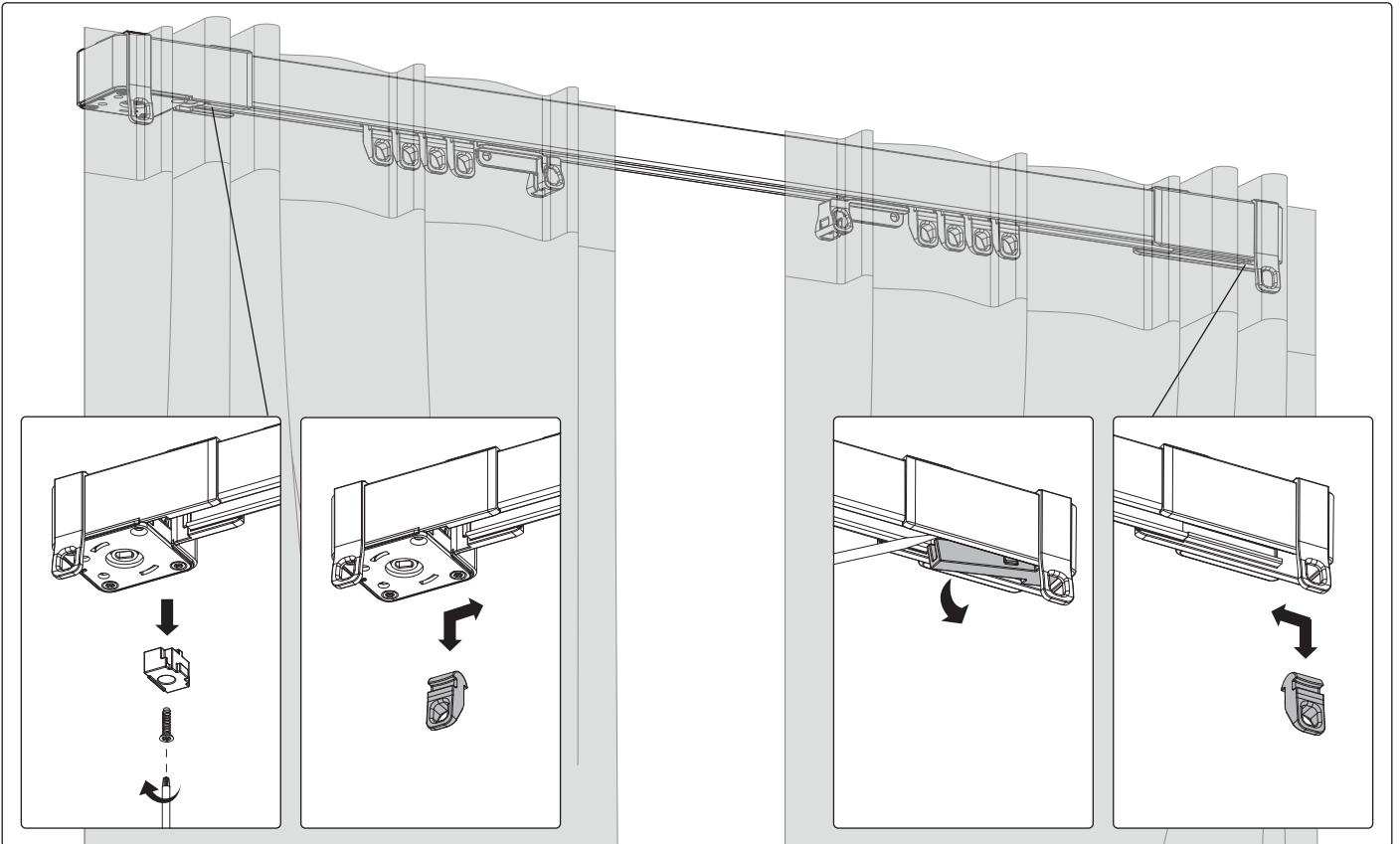


i There are multiple positions available for the support hook.

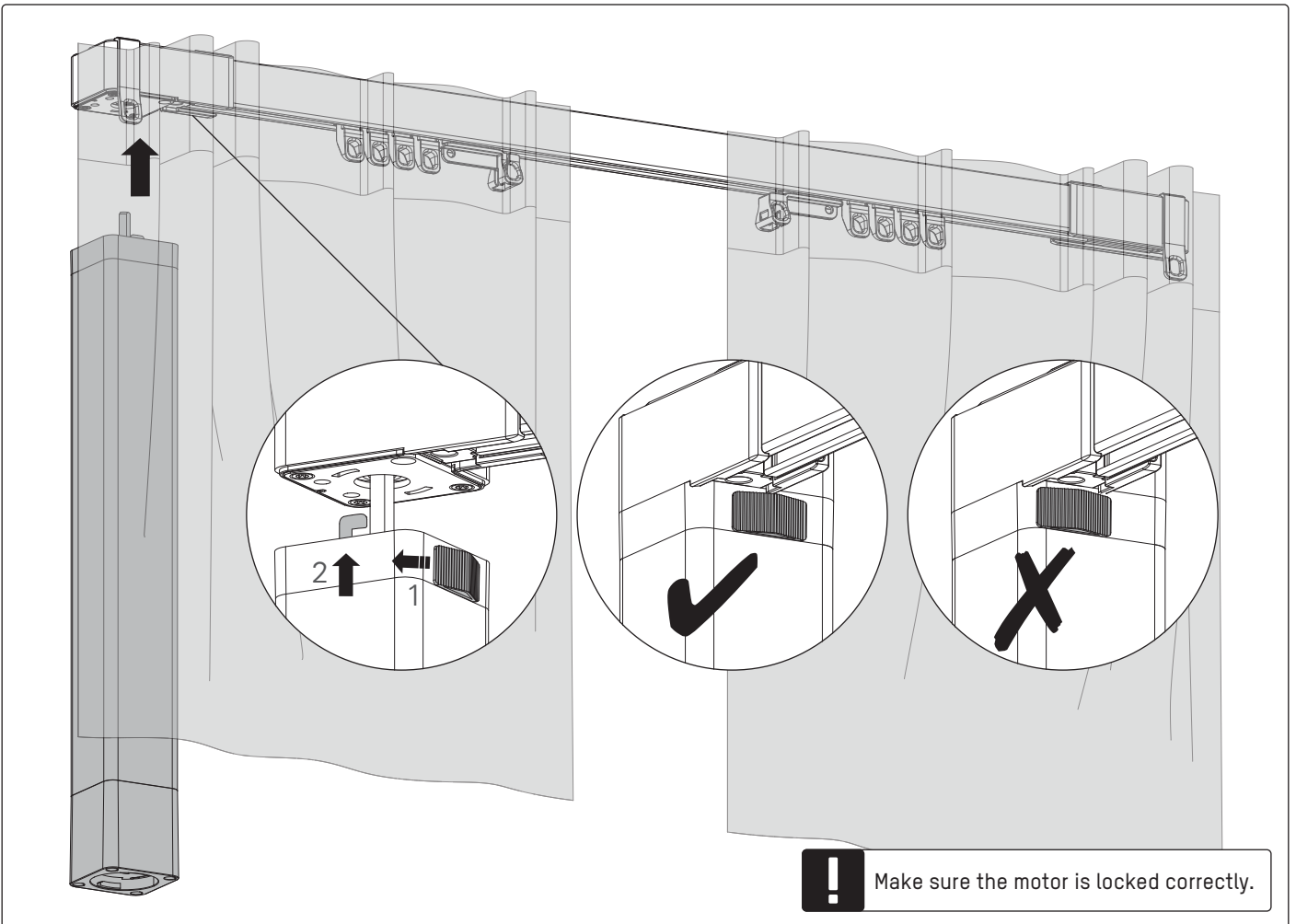
i Also place a support hook on the terun end cap.



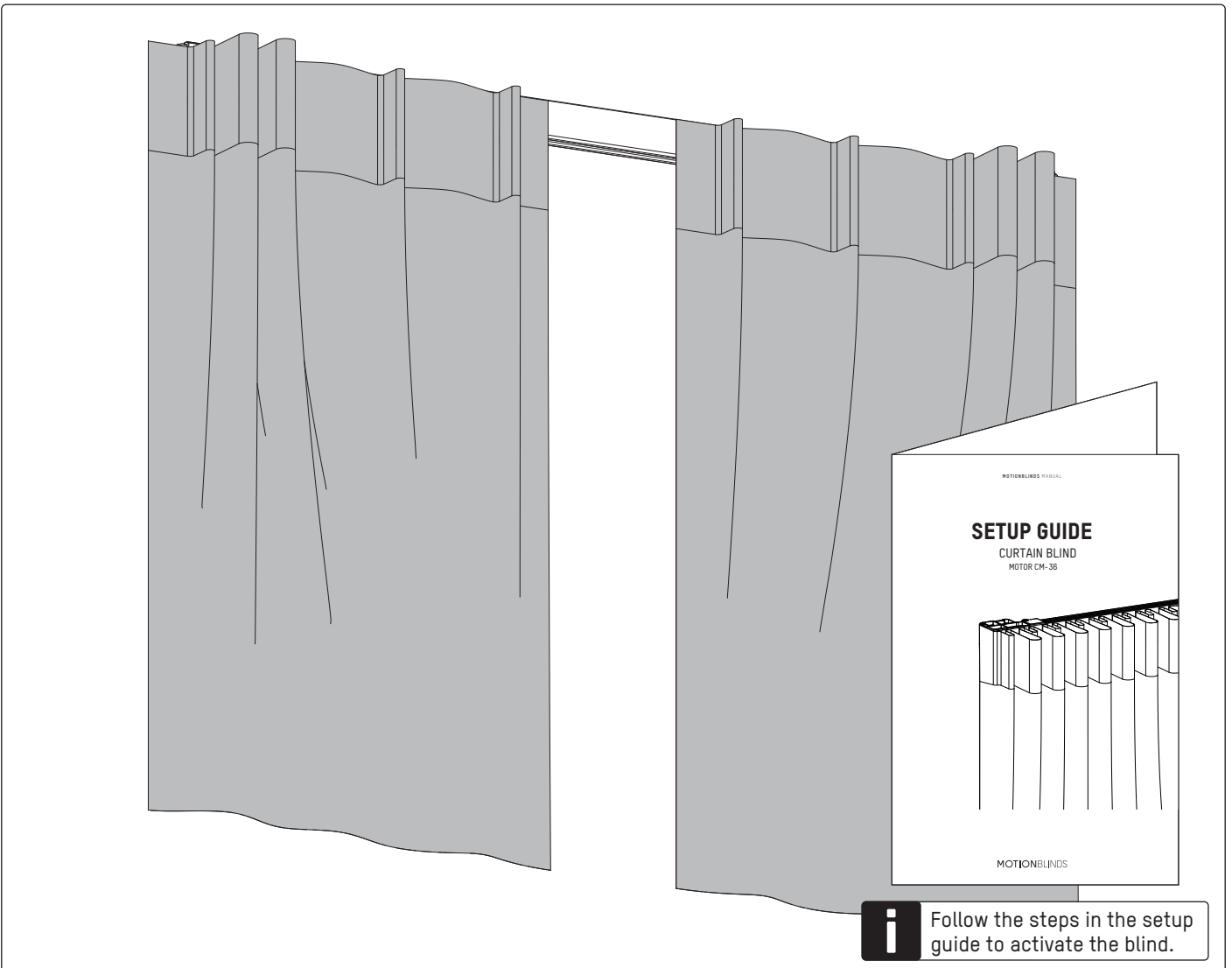
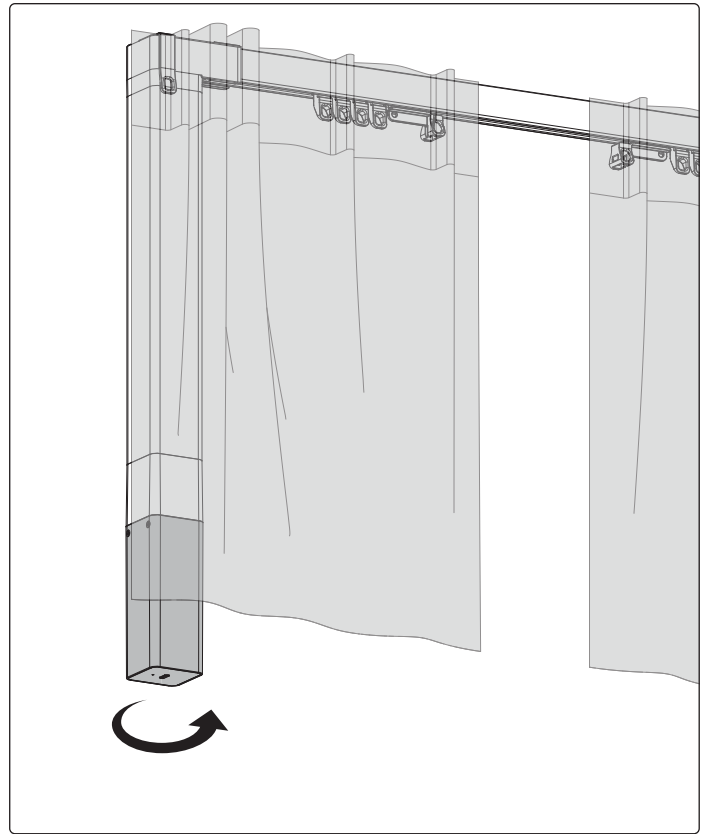
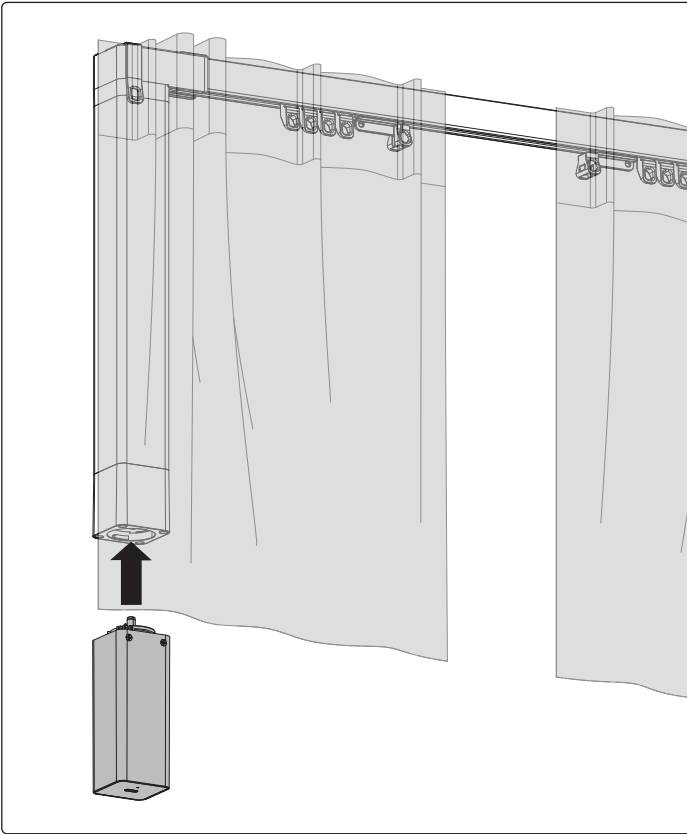




i It is possible to remove or add runners.



! Make sure the motor is locked correctly.



Follow the steps in the setup guide to activate the blind.